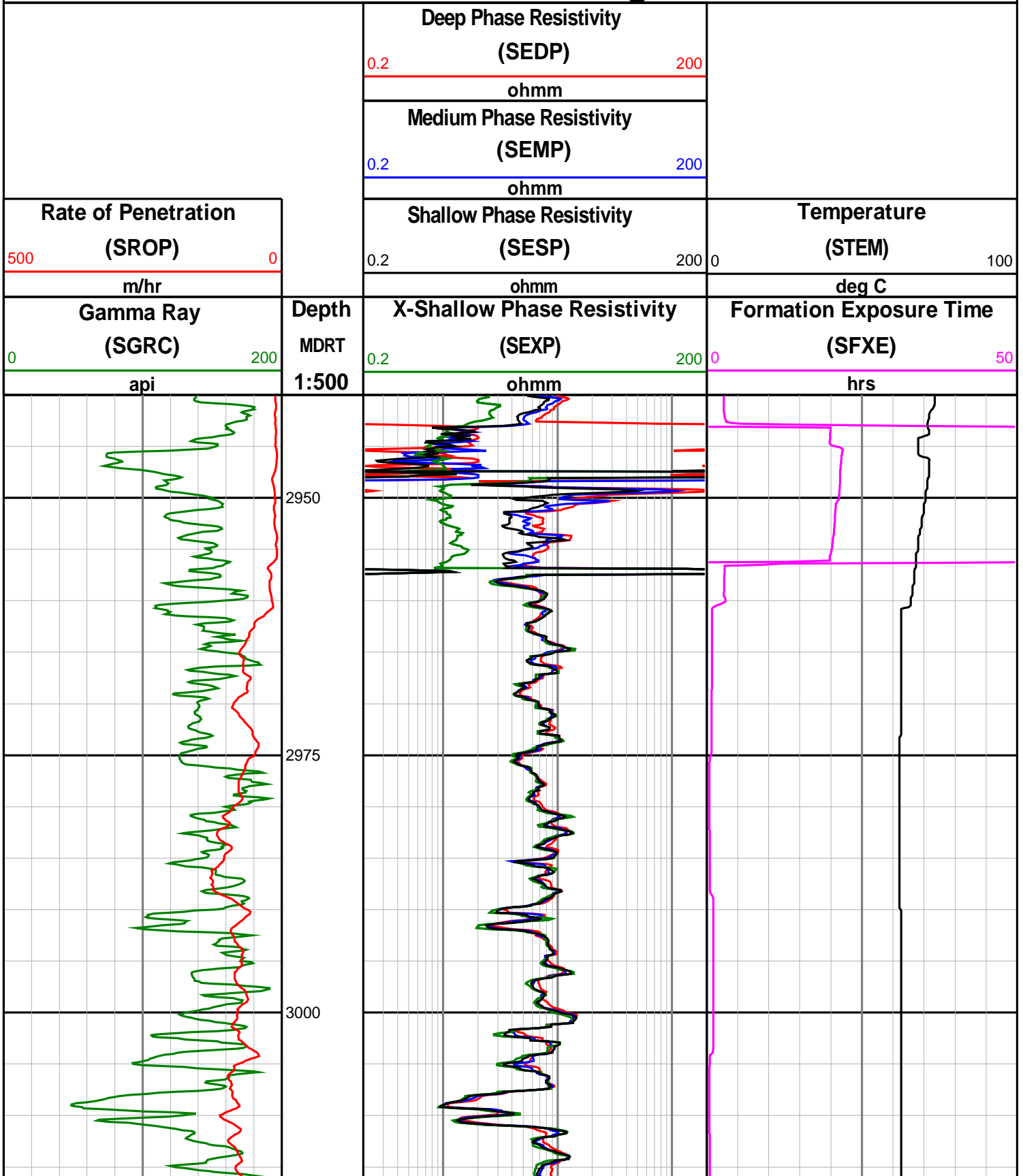
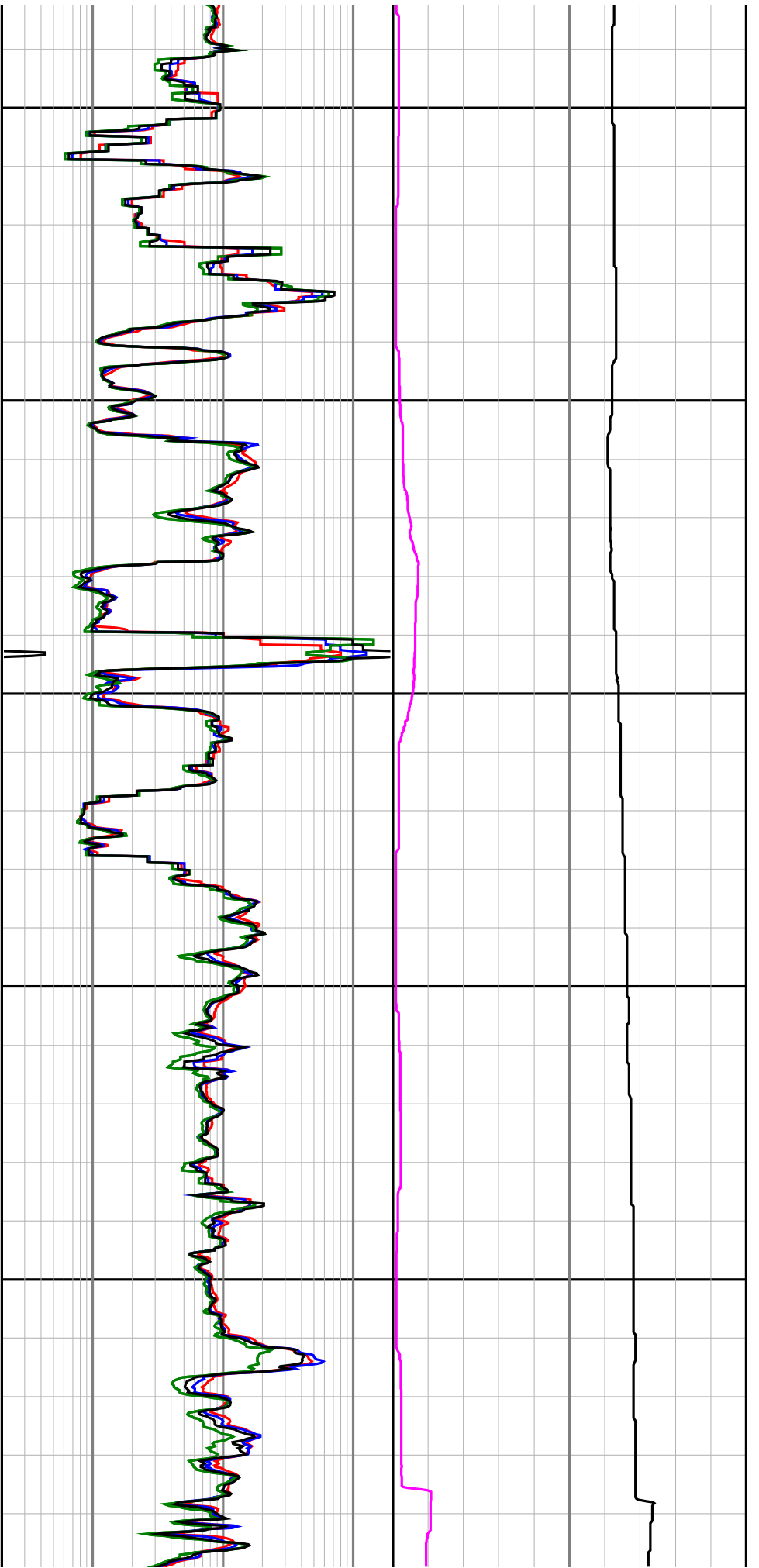
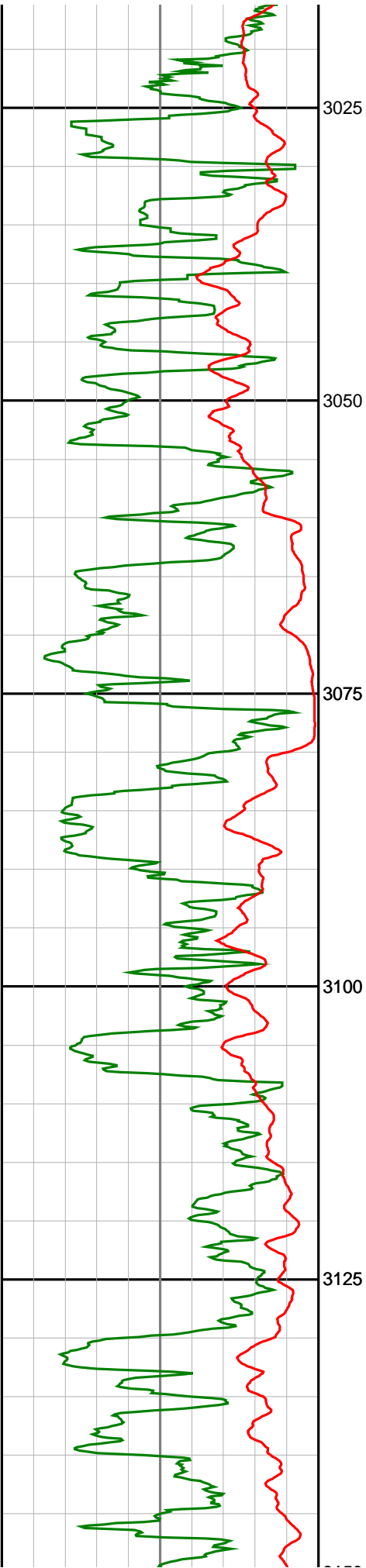


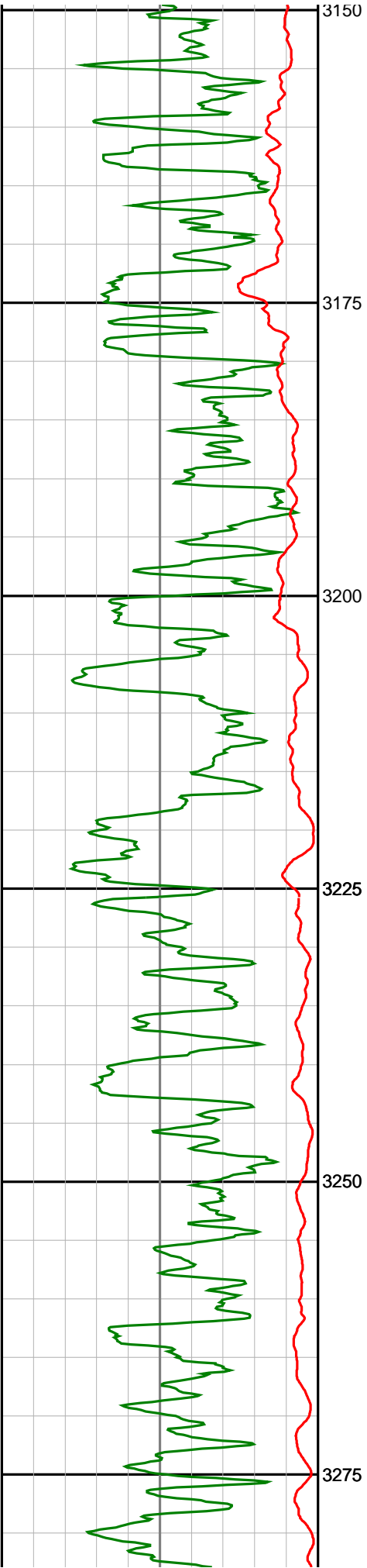
# Anzon Australia Ltd

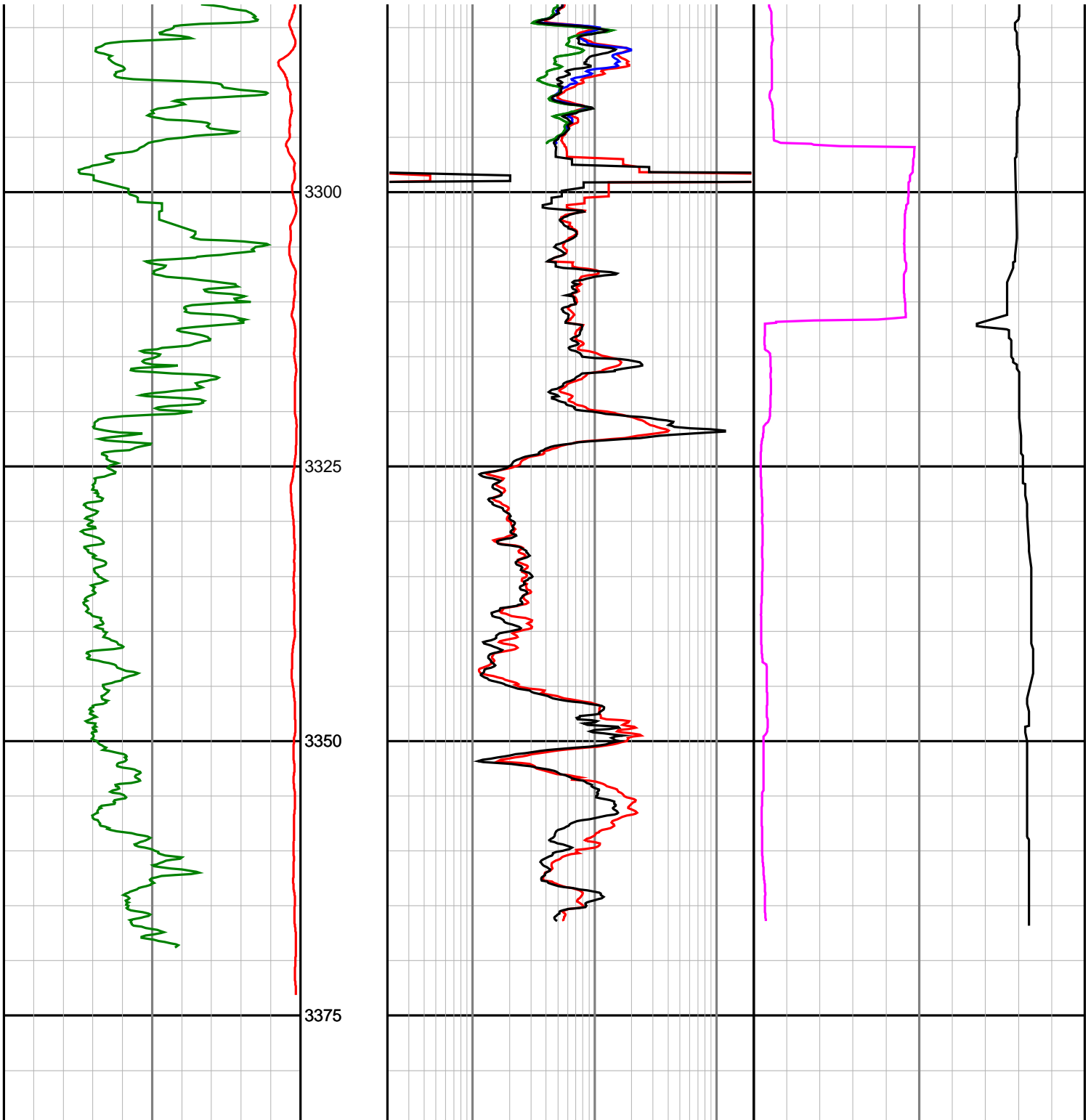
## Basker-2

### LWD Realtime & Recorded Log - 8 1/2" Hole









<p><b>Gamma Ray (SGRC)</b></p> <p>0 200</p> <p>api</p>	<p><b>Depth</b></p> <p>MDRT</p> <p><b>1:500</b></p>	<p><b>X-Shallow Phase Resistivity (SEXP)</b></p> <p>0.2 200</p> <p>ohmm</p>	<p><b>Formation Exposure Time (SFXE)</b></p> <p>0 50</p> <p>hrs</p>
<p><b>Rate of Penetration (SROP)</b></p> <p>500 0</p> <p>m/hr</p>		<p><b>Shallow Phase Resistivity (SESP)</b></p> <p>0.2 200</p> <p>ohmm</p>	<p><b>Temperature (STEM)</b></p> <p>0 100</p> <p>deg C</p>
		<p><b>Medium Phase Resistivity (SEMP)</b></p> <p>0.2 200</p> <p>ohmm</p> <p><b>Deep Phase Resistivity</b></p>	

(SEDP)

0.2

200

ohmm